



Elite Home Office[®] and Roku HD Setup

Spot On Networks' Elite Home Office[®] offers the user the advantages of having your own private wireless network within our larger network. Print wirelessly, share files between devices, and stream media using your Roku HD on your own private network with WPA encryption.

Your wireless SSID (Service Set Identifier, or wireless LAN ID) and your WPA (WiFi Protected Access) passphrase are provided for you in the box below. Keep them in a safe place for future reference. Do not share these with others, as this is what protects the privacy of your network from outsiders.

Wireless SSID: _____	WPA Passphrase: _____
-----------------------------	------------------------------

1.0 Connecting the Elite Home Office[®] Router to the SpotOn network

1. Place the Elite Home Office[®] router in an area where it will not be disturbed or dropped. Since the router is wireless, you can place it in any convenient location in your apartment. If you are connecting any wired Ethernet device(s), place the router in a convenient location near your wired Ethernet device(s).
2. Connect any wired Ethernet device(s) to the LAN ports.
3. Plug in your Elite Home Office[®] router. See Figure 1.



Figure 1 Elite Home Office[®] Router (four LAN Port model).

4. Power up the Elite Home Office[®] router and wait 2 to 3 minutes. When the router is fully operational, the first, third, and fourth status lights will turn green (see Figure 1). If you have one or more wired Ethernet devices connected, the second status light should also turn green.

The four Status lights have the following functions:

- **Status Light 1:**—Power on when displaying green
- **Status Light 2:**—Wired Ethernet line is connected to a LAN port when displaying green.
- **Status Light 3:**—Wireless Signal (WLAN) is present when displaying green.
- **Status Light 4:**—Solid green: excellent signal. Flashing green: good signal

2.0 Connecting your Windows XP PC to the Wireless Network

1. On your computer, point your cursor to the Wireless Network icon in the tool tray in the lower right corner of your desktop (see Figure 2).

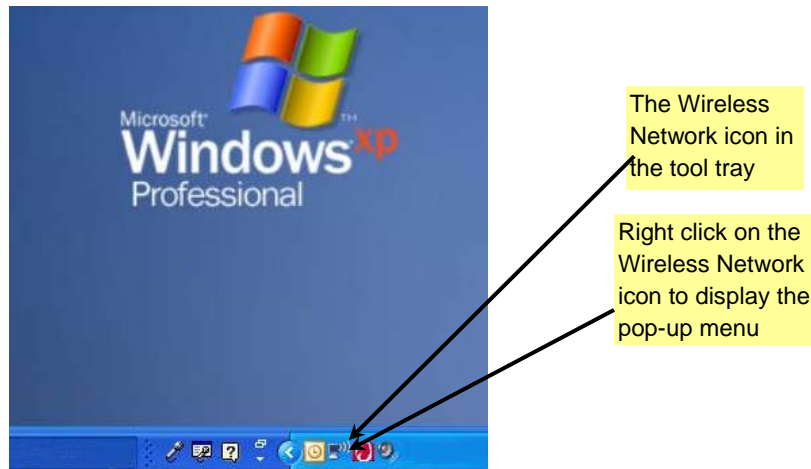


Figure 2. The Wireless Network Icon in the Tool Tray

2. Right click on the Wireless Network icon to bring up the pop-up menu (see Figure 3).

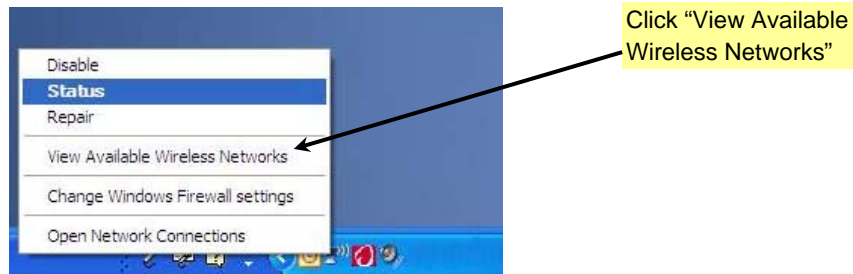


Figure 3. The Wireless Network Pop-up Menu

3. Click "**View Available Wireless Networks**".
The window (see Figure 4) is displayed allowing you to choose a wireless network.
4. Click on the wireless network SSID corresponding to your Elite Home Office® and click Connect.

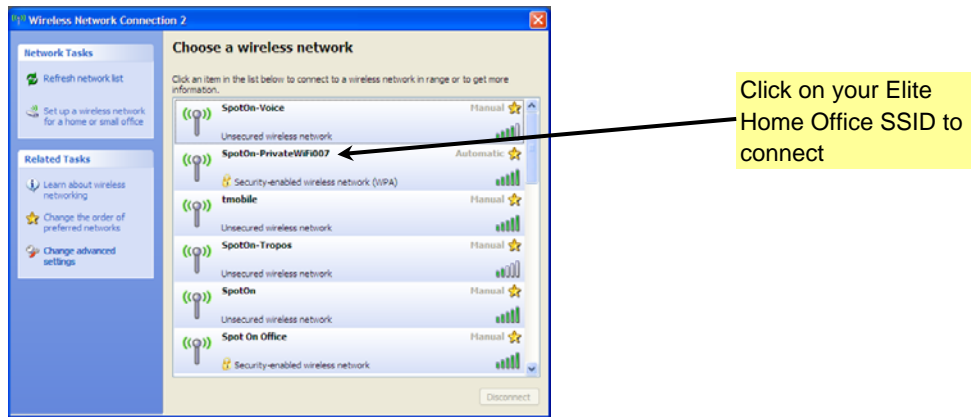


Figure 4. All Available Wireless Networks Are Listed in “The Wireless Network Connection Window”

5. When prompted, enter your WPA passphrase provided on Page 1 (see Figure 4).
6. Click **“Connect”**.

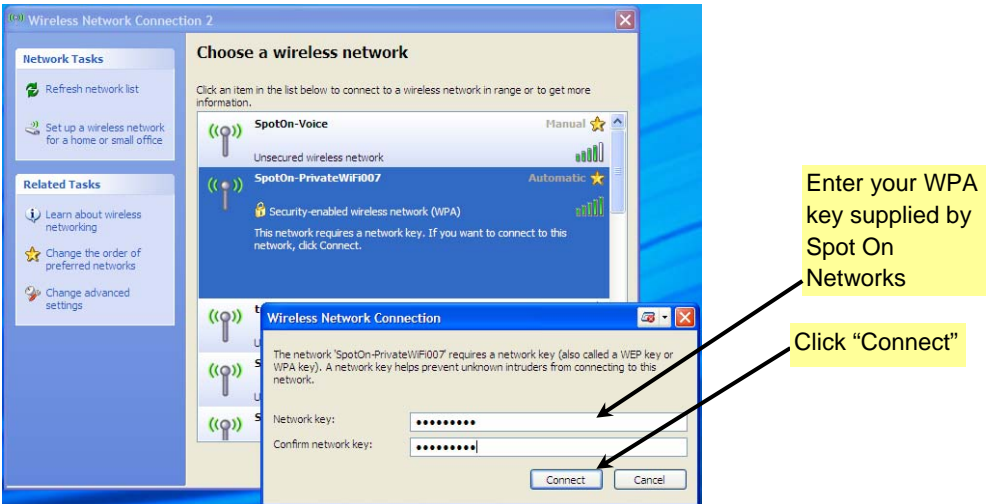


Figure 4. The Elite Home Office® WPA Security Screen

Figure 5 shows that your computer is connected to the Elite Home Office® router.

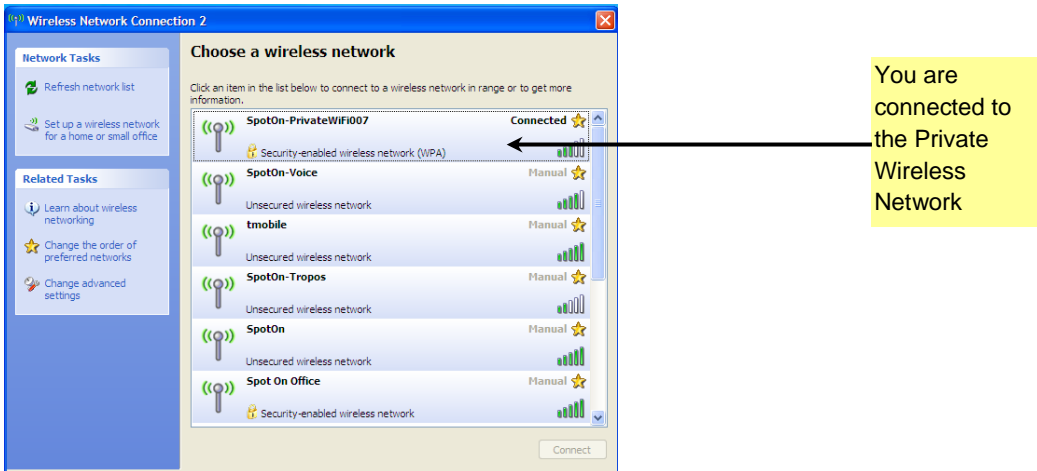


Figure 5. Connected to your Elite Home Office®

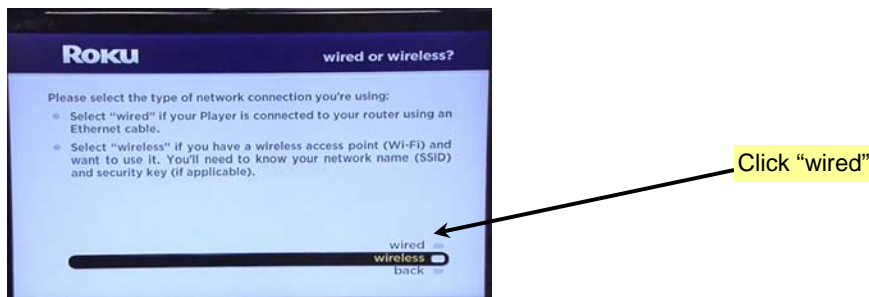
Your computer is now connected.

Now, launch your browser and start surfing!

3.0 Roku HD Network Setup

3.1 Connect using an Ethernet Cable

1. First, go through the Quick Setup for your Roku to connect it to your TV.
2. Using the Ethernet cable included in the box, connect one end to the Ethernet port on the back of your Roku HD device and the other end of the cable to one of the LAN ports on the back of the Elite Home Office® router.
3. Bring the Roku screen up on your TV and press the **Home** Button at the top of your remote to make the Home Menu appear.
4. Select **Settings**.
5. Select **Network**.
6. Choose **repeat guided setup** or **guided setup** if the Roku has not been set up yet.

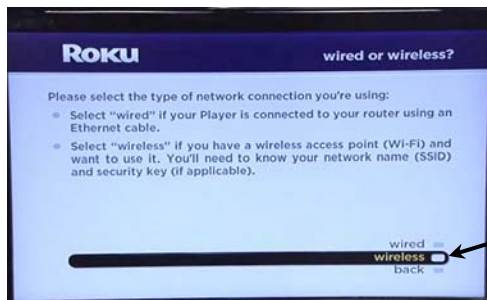


7. On the next screen (shown above), choose **wired**.
8. The device will test the connection and, if successful, go back to the **Home Menu**.
9. Your Roku device is now connected and ready to stream video!

3.2 Connect Wirelessly

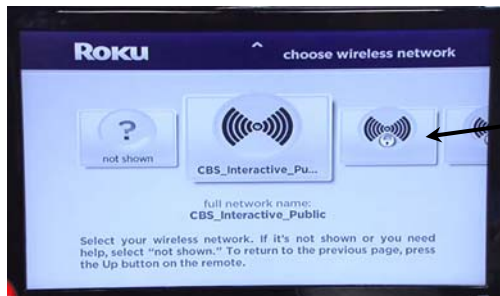
1. If you are unable to set your Elite Home Office® router close enough to your Roku HD to connect using the provided Ethernet cable, you can connect it wirelessly using the supplied SSID and WPA passphrase provided on Page 1.
2. Bring the Roku screen up on your TV and press the **Home** Button at the top of your remote to make the Home Menu appear.
3. Select **Settings**.
4. Select **Network**.

5. Choose **repeat guided setup** or **guided setup** if the Roku has not been set up yet.



Click "wireless"

6. On the next screen (shown above), choose **wireless**.
7. When asked to choose a wireless network, select the wireless network SSID corresponding to your Elite Home Office® (provided on Page 1).



Scroll through available networks to choose your network. It should have the lock symbol indicating an encrypted signal.

8. When prompted, enter your WPA passphrase (also provided on Page 1).
9. The device will test the connection and, if successful, go back to the **Home Menu**. If the test fails, **try testing it one more time** because it may take a few seconds to authenticate on the network.
10. Your Roku device is now connected and ready to stream video!